



# MASKING

## BEST PRACTICE

### Moldings and Trim

Use trim tape to lift moldings off of the vehicle surface to allow paint coverage under the molding and eliminate a hard paint line. Norton trim tape can be used 3 different ways to fit all moldings and is perforated for easy tearing. Works well on sidelights, back glass moldings and flush mount windshields.

**Objective:** Allow paint coverage under the moldings and eliminate hard paint edges around moldings and trim



### Protect Jamb and Body Apertures

Use premium foam masking tape to protect jamb and apertures from overspray and to produce a soft paint edge. Use foam tape instead of masking tape and paper to increase productivity and to save on material costs. Premium foam masking tape can be applied to fixed or moving parts and the offset adhesive should be applied to the inside of the panel. Close the panel then smooth the tape to the desired depth.

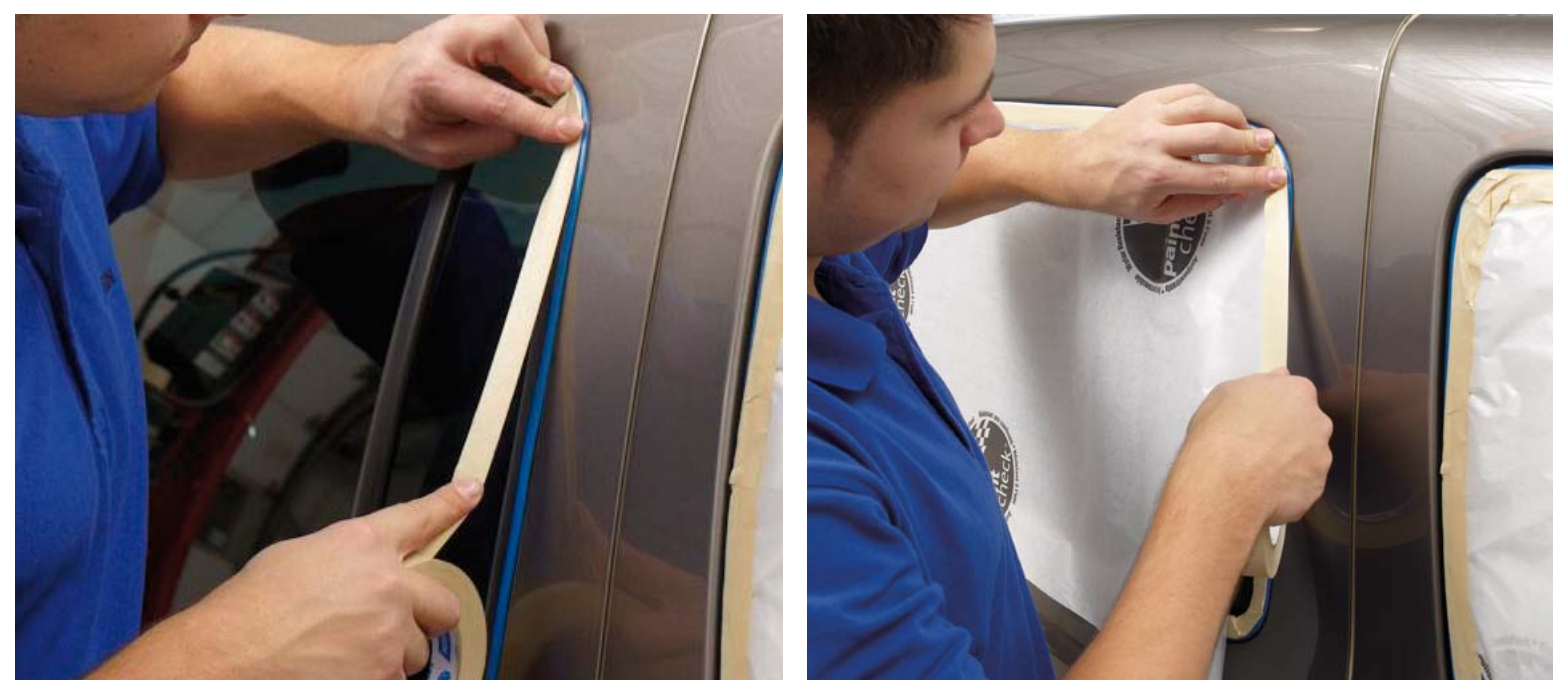
**Objective:** Prevent paint overspray from penetrating jamb, hood and trunk gutters etc. and to produce a soft paint edge.



### Windows

Use masking tape and paper to cover windows, lights and trim within the spray area. Use fine line tape first if you have difficult contours to mask.

**Objective:** Prevent paint overspray on the glass, lights and trim.



### Outline the Spray Area

Outline the spray area with white Norton "Paint Check" paper.

**Objective:** Using the white "Paint Check" paper will not distort the light that reflects into the paint match area, as can happen with colored paper. The coverage test "Paint Check" logo helps to gauge paint coverage.

**Tip:** To keep the paint area cleaner while spraying, reverse mask the wheel wells with 18" paper. This measure will keep most, if not all, of the dirt that is behind the wheel to stay underneath the car.



### Cover the Vehicle

Outline the area to be sprayed with 1-1/2" masking tape. Cover the entire vehicle with plastic sheeting and then cut out the area to be sprayed. Attach the plastic along the cut edge to the tape outline using 3/4" or 1-1/2" masking tape.

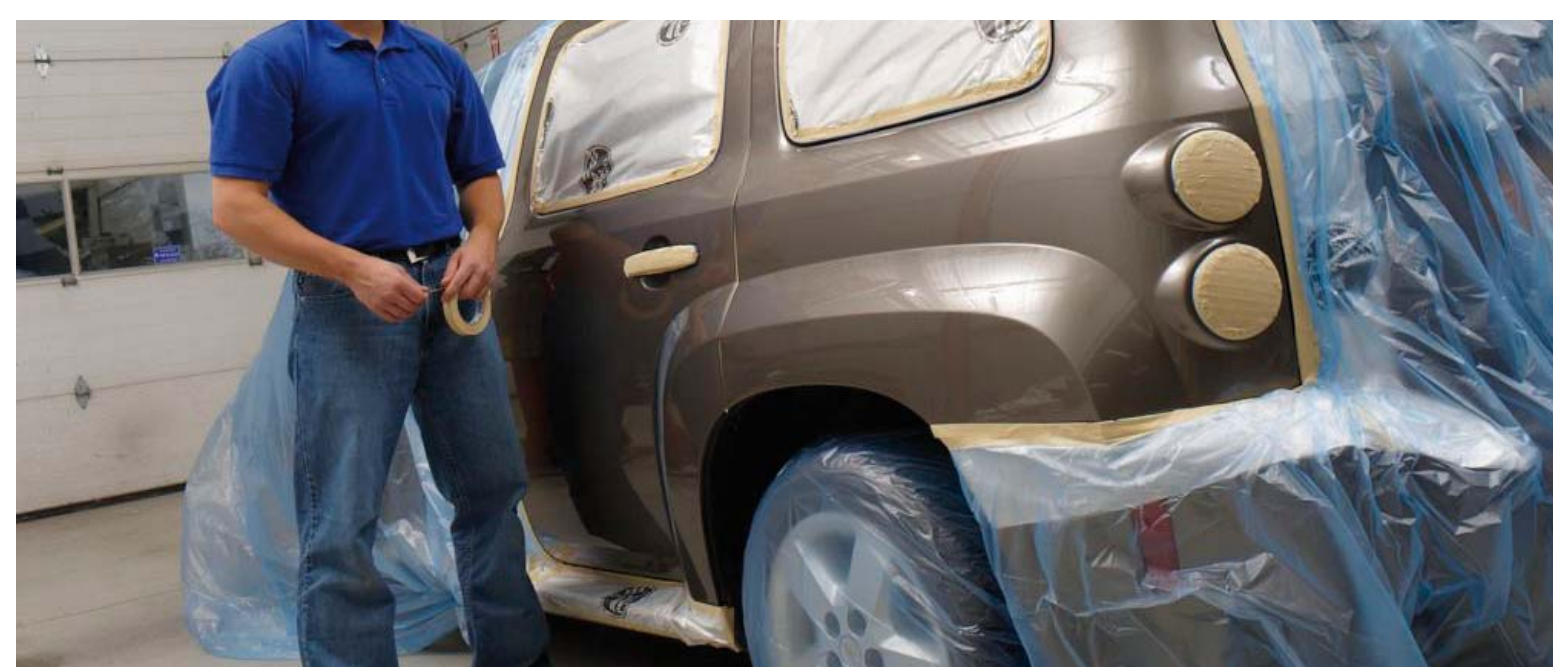
**Objective:** Protect panels that are not being painted from overspray.



### Final Check

Double check that all exposed areas are covered, including the wheels using Blue Wrap paintable plastic wheel maskers.

**Objective:** Prevent costly re-work.



## MASKING PRODUCTS

PART NO.	SIZE
<b>PREMIUM TRIM MASKING TAPE – PERFORATED</b>	
06169	50mm x 10m (2' x 10.94 yds.)
<b>BLUE FINE LINE MASKING TAPE</b>	
72018	1/8" x 36 yds.
72014	1/4" x 36 yds.
72012	1/2" x 36 yds.
06174	3/4" x 36 yds.
<b>PREMIUM FOAM MASKING TAPE</b>	
70746	20mm x 50m (3/4" x 54.6 yds.)
<b>FOAM MASKING TAPE</b>	
70735	13mm x 50m (1/2" x 54.6 yds.)
<b>TAN – PREMIUM MASKING TAPE</b>	
05838	18mm x 55m (3/4")
36220	36mm x 55m (1-1/2")
36219	48mm x 55m (2")
<b>TAN – PREMIUM MASKING TAPE-DOUBLE ROLL</b>	
00477	18mm x 110m (3/4")
<b>GOLD – PERFORMANCE MASKING TAPE</b>	
06157	18mm x 55m (3/4")
06158	36mm x 55m (1-1/2")
06159	48mm x 55m (2")
<b>BLUE SHEETING TRI-LAYER PAINTABLE PLASTIC</b>	
03344	12' x 400'
03697	14' x 350'
03345	16' x 350'
03723	20' x 350'
<b>OVERSPRAY PROTECTIVE SHEETING</b>	
06727	12' x 400'
06728	16' x 400'
<b>MOBILE MASKER</b>	
89208	4 tier-2 up to 12", 2 up to 18"
<b>WHITE "PAINT CHECK" MASKING PAPER</b>	
00402	6" x 750'
00403	12" x 750'
00404	18" x 750'
06224	24" x 750'
00407	36" x 750'
<b>BLUE MASKING PAPER</b>	
05482	6" x 750'
05479	12" x 750'
05480	18" x 750'
05481	36" x 750'
<b>BLUE WRAP WHEEL MASKERS</b>	
05922	Fits up to 17"