



It's in the Air

Unique "no kick" co-axial air valve make blends and fades easier

Ultimate Control

Fan and fluid controls designed for smooth operation

Trigger Happy

Engineered for ultimate comfort, the trigger profile offers an easy wrap around finger grip when triggered or at rest

Ergonomically Designed

Lightweight aluminum gun body provides curved handle resulting in unmatched comfort for increased performance and reduced painter fatigue

QuickClean™ Technology

- Incredibly fast cleanup – gun coating has non-stick properties
- Fully coated outside and inside for high corrosion and scratch resistance
- Excellent for solvent-based coatings and a must for waterborne

Ergonomic & Lightweight Design

- Compact, form-fitting design helps reduce painter fatigue
- Well-balanced and lightweight for increased comfort and performance
- Smooth trigger action—Comfortable trigger and unique "no kick" co-axial air valve make blends and fades easier

All-Climate Performance

- Optimized performance in climates varying from hot and humid to cold and dry
- Three air caps developed using advanced fluid dynamics technology for excellent atomization in varying conditions
- Outstanding finishes – from waterborne base coats to the latest high solids clears

Fastest Cleaning Spray Gun...
Only from DeVilbiss

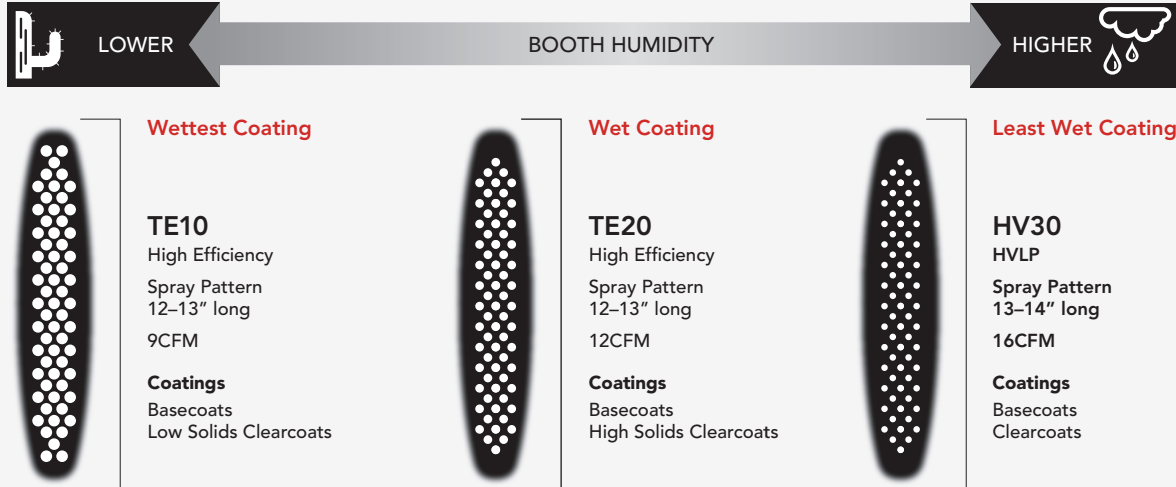


Fully Coated, Inside and Out



Air Cap Selection Guide

Droplet size and coating need



Wettest Coating



TE10
High Efficiency
Spray Pattern
12-13" long
9CFM
Coatings
Basecoats
Low Solids Clearcoats

Wet Coating



TE20
High Efficiency
Spray Pattern
12-13" long
12CFM
Coatings
Basecoats
High Solids Clearcoats

Least Wet Coating



HV30
HVLV
Spray Pattern
13-14" long
16CFM
Coatings
Basecoats
Clearcoats

TEKNA ProLite Models

Order No.	Fluid Nozzles (mm)	Cup Type	Air Caps	SRP
703513	1.2 & 1.3	900cc Aluminum	TE20 HV30	\$549
703514*	1.2 & 1.3	None	TE10 HV30	\$499
703515*	1.2 & 1.3	None	TE20 HV30	\$499
703516*	1.3 & 1.4	None	TE10 HV30	\$499
703517*	1.3 & 1.4	None	TE20 HV30	\$499

* Uncupped guns include DPC-43 DeKups adapter

1. Air Cap Replacement Parts

Air Cap Order No.	Air Cap	Inlet pressure BAR/PSI	Air Flow LPM/SCFM
703540 (HVLP)	HV30	1.4 - 1.6 bar 20 - 24 psi	411 - 467 LPM 14.5 - 16.5 CFM
703538 (HE)	TE10	1.4 - 2.4 bar 20 - 35 psi	212 - 311 LPM 7.5 - 11.0 CFM
703539 (HE)	TE20	1.1 - 1.8 bar 16 - 26 psi	255 - 340 LPM 9 - 12 CFM

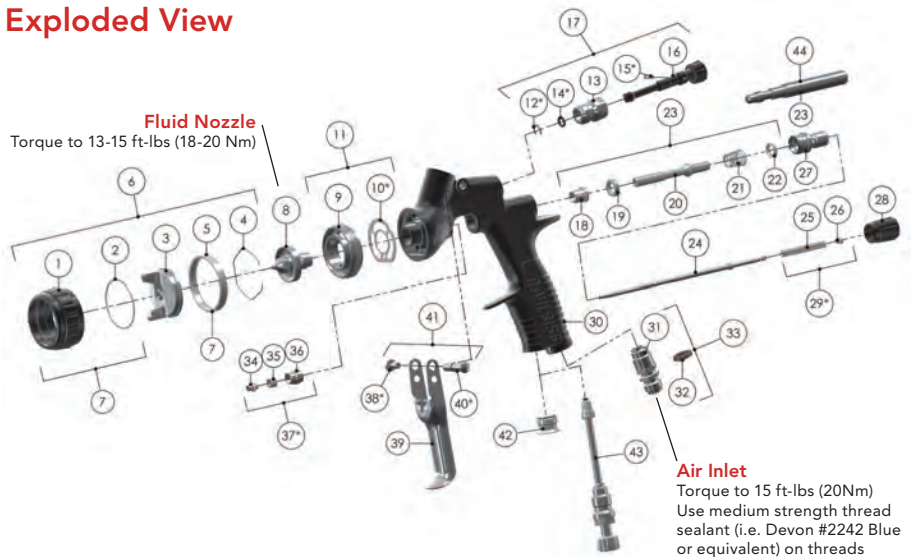
2. Fluid Nozzles

Fluid Nozzle Order No.	No. on Fluid Nozzle	Tip Size (mm)
703521	PRO-200-12	1.2
703522	PRO-200-13	1.3
703523	PRO-200-14	1.4

All Models Include

- Extra needle/nozzle set
- Digital gauge with air adjusting valve (HAV-555)
- Gun wrench and color identification rings

Exploded View



Ref #	Description	Part #	Qty
1	Air Cap Retaining Ring		1
2	Slip Ring		1
3	Air Cap		1
4	Air Cap Retaining Clip	191972	1
5	Retaining Ring Seal		1
6	Aircap & Ring	Chart 1	1
7	Air Cap Retaining Ring & Seals	702725	1
8	Fluid Nozzle	Chart 2	1
9	Spray head		1
10	Spray head Seal	702726	1
11	Spray head kit	703529	1
12	Circlip		1
13	Valve Body		1
14	O Ring		1
15	Spreader Valve Pin		1
16	Spreader Valve Adjusting Knob		1
17	Spreader Valve Assembly	702730	1
18	Front Valve Seal		1
19	Valve Seat		1
20	Spindle		1
21	Air Valve Spring		1
22	Rear Valve Seal		1
23	Air Valve Kit	703530	1
24	Fluid Needle	703531	1

Ref #	Description	Part #	Qty
25	Needle Spring		1
26	Spring Pad		1
27	Housing & Seal Kit	703532	1
28	Fluid Adjusting Knob	703533	1
29*	Needle Spring Kit	703534	1
30	Gunbody		1
31	Air Inlet		1
32	Colour ID Ring Kit (4 Colours)	702735	1
33	Air Inlet Kit	702734	1
34	Needle Packing		1
35	Packing Spring		1
36	Packing Nut		1
37*	Packing, Spring and Packing Nut Kit	702731	1
38*	Trigger Screw		1
39	Trigger		1
40*	Trigger Stud		1
41	Trigger Stud & Screw Kit	703535	1
42	Plug		1
43	Cheater Valve (optional)	702737	1
44	Air Valve Service Tool (only included in the Air Valve Kit 23)		1
Service Parts			
Spray Gun repair kit (includes items marked *)		703536	
Seal and Pin Kit, kit of 5 (items 12, 14 and 15)		192229	